

CELEBRATE THE GOD OF SPEED IN INVERCARGILL

SOUTHLAND MOTORCYCLE CLUB PRESENTS

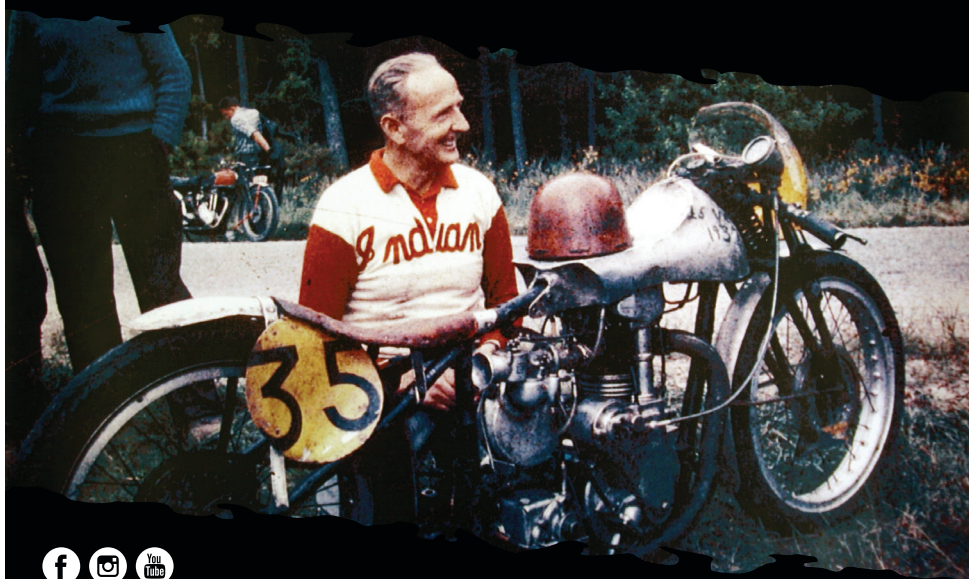
Burt Munro

Challenge

7-11 FEBRUARY 2024

COMPETITOR EVENT INFO MANUAL

SCHEDULE OF EVENTS AND SUPPLEMENTARY RULES



DISCOVER MORE AT BURTMUNROCHALLENGE.CO.NZ

Warning!

MOTORCYCLE RACING IS DANGEROUS

Persons attending this event do so entirely at their own risk. It is a condition of admission that all persons having any connection with the promotion and/or organisation and/or conduct of the event including the owners of the land and drivers/owners of the vehicles are absolved from any liability arising out of any accidents howsoever caused resulting in damage and/or personal injury to spectators. By purchasing a ticket/entering into the racing event/s you agree to follow instructions of the Burt Munro Challenge officials, volunteers, support staff and emergency services while at the event/s.

PLEASE BE MINDFUL OF YOUR PHYSICAL AND NATURAL ENVIRONMENT AT BURT MUNRO CHALLENGE EVENTS

- Dispose of rubbish in the bins provided or take it away with you.
- Respect neighbours and minimise noise where possible.
- All competitors are solely responsible for the behaviour of their pit crew and companions. Unacceptable/inappropriate behaviour will not be tolerated.
 - When refuelling your motorcycle, please only do this in the designated refuelling areas at each event. If you are unsure please ask one of the officials. There are waste oil tanks at Teretonga beside the men's pit toilet. If you spill any fuel or oil please inform one of the officials as we have spill kits at each event.



WELCOME

Fellow riders, thrill-seekers, and adrenaline junkies, the Southland Motorcycle Club are ecstatic to welcome you to the 17th Burt Munro Challenge, an exhilarating celebration of two-wheeled adventures and the unwavering spirit of motorcycling. Whether you're a seasoned veteran or a fresh-faced rider eager to explore new horizons, we have something for everyone.

Prepare to be captivated by the symphony of roaring engines, the intoxicating aroma of gasoline, and the camaraderie of fellow riders as we embark on an unforgettable journey. This year's event promises to be an adrenaline-fueled extravaganza, packed with exhilarating racing, breathtaking scenery, and plenty of opportunities to make new friends.

The Burt Munro Challenge is an event like no other, we encourage you to take this time to 'switch off' and fully immerse yourself into the experience that is 'The Burt'. Don't worry about what the weather may bring, worry about what your offering will be to the God of Speed. I encourage you to get out on your motorcycles and ride around our fantastic local roads. Friday would be a great day to head out around the "mountain" (Longwoods) through Riverton, Colac Bay through Tuatapere to Ohai and return via Winton or head out to the Catlins. Get back for the New Zealand Beach Racing Championships held on Friday evening, which is not to be missed.

The Burt is what you make of it; camp at the Rally Site, book a hotel/motel, whatever spins your wheels. Southland prides itself on its hospitality, and we look forward to welcoming and sharing all that it has to offer with you.

As you gear up for this exhilarating adventure, we extend our gratitude to our sponsors, organizers, and volunteers who have worked tirelessly to make this event a reality. Their dedication and passion for motorcycling are the driving force behind the success of the Burt Munro Challenge. To the ILT Foundation, Invercargill City Council, Great South, E Hayes & Sons, Indian Motorcycle, Honda, Star Insurance, Super Seller Shelley, Jack Daniels, Craigs Design & Print, Interislander, Southern Dragways, MNZ and all of the local businesses and organisations that continue to support us each year - a huge thank you!

Thank you to the Burt Munro Challenge committee, your hours of effort are valued, your commitment and passion is appreciated and cherished by so many! And lastly, thank you to our competitors and spectators for heading South, you're in for one hell of a week!

So, let's rev our engines and embark on a journey of pure exhilaration. Together, we'll create memories that will last a lifetime.

Ride with passion, ride with safety, and ride with us!

Bill Moffatt

Burt Munro Challenge Committee Chairman



BURT MUNRO CHALLENGE RALLY

Thursday 8 – Sunday 11 February

JOIN US AT THE BURT MUNRO RALLY AT ORETI PARK IN OTATARA, INVERCARGILL!

The Rally Site

Staying at the Burt Munro Challenge rally site gives you access to designated spaces for tent or campervan camping, toilets and a shower block, rubbish bins, water, and entertainment, plus access to the shuttle bus to and from the Beach Racing down the road at Oreti Beach. There is also breakfast and dinner meals, drinks, and merchandise available for purchase on site.

The rally site will be open from 12pm Thursday to 10am Sunday. You are welcome to camp at the site outside of the official opening hours, however please be aware that no facilities (including toilets) will be provided.

Everyone staying at the rally site and all visitors are required to be registered and have a pass.

Discover more on the Burt Munro Challenge website

Rally Passes

There are two types of rally site passes available for purchase; both give you access to the rally site camping areas and facilities. The all access pass gives you entry to all five racing events or the general pass gives you a 50% discount on racing events of your choice.

Rally passes are not distributed prior to the event; they are to be collected on arrival to the rally site from the registration tent by providing your name and order number.

Site Schedule

Wednesday 7 February

- 12.00pm Rally site available for early camping (no facilities)
- 12.00pm Registration tent opens (pre-purchased pass pick-up)
- 7.00pm Registration tent closes

Thursday 8 February

- 9.00am Registration tent opens
- 12.00pm Rally site officially opens
- 5.00pm Bar opens
- 5.30pm Dinner begins
- 7.00pm Registration tent closes
- 8.00pm Entertainment begins:
SIT School of Music
- 9.00pm Dinner finishes
- 10.00pm Entertainment finishes

Friday 9 and Saturday 10 February

- 7.00am Breakfast begins
- 9.00am Breakfast finishes
- 9.00am Registration tent opens
- 3.00pm Bar opens
- 5.30pm Dinner begins
- 7.00pm Registration tent closes
- 7.00pm Entertainment begins:
Hired Guns & Jet Set (Fri)
Hired Guns & Yardmen (Sat)
- 11.00pm Dinner finishes
- 1.00am Entertainment finishes

Sunday 11 February

- 7.00am Breakfast available
- 9.00am Breakfast finishes
- 10.00am Rally site officially closes

BURT MUNRO CHALLENGE RACE EVENTS

Wednesday 7 – Sunday 11 February

Southland Honda Track Day

8:30am • Wednesday 7 February
Teretonga Park, Sandy Point

Spectators welcome at no charge

Star Insurance NZ Hill Climb Champs

10am • Thursday 8 February
Flagstaff Road, Bluff

Spectator: \$20 per person
Children under 15: Free
General Rally Pass: \$10 (must show rally pass)
All Access Rally Pass: Free (must show rally pass)

Indian Motorcycle Twilight Drag Racing

6pm • Thursday 8 February
Teretonga Park, Sandy Point

Spectator: \$20 per person
Children under 15: Free
General Rally Pass: \$10 (must show rally pass)
All Access Rally Pass: Free (must show rally pass)

Indian Motorcycle Beach Racing & NZ Champs

6pm • Friday 9 February
Oreti Beach, Otatara

Spectator: \$20 per person
Children under 15: Free
General Rally Pass: \$10 (must show rally pass)
All Access Rally Pass: Free (must show rally pass)

Super Seller Shelley Speedway

3pm • Saturday 10 February
Oreti Park Speedway, Otatara

Spectator: \$20 per person
Children under 15: Free
General Rally Pass: \$10 (must show rally pass)
All Access Rally Pass: Free (must show rally pass)

E Hayes & Sons Teretonga Sprint Races & NZ Superbike Champs

9am daily
Friday 9 – Sunday 11 February
Teretonga Park, Sandy Point

Friday only

Spectators welcome at no charge

Saturday and Sunday

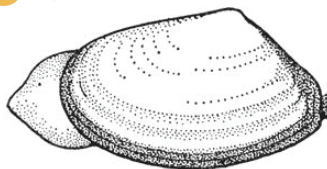
Spectator: \$20 per person
Children under 15: Free
General Rally Pass: \$10 (must show rally pass)
All Access Rally Pass: Free (must show rally pass)



**SPECTATOR TICKETS ARE
AVAILABLE ONLINE OR
AT THE GATE ON THE DAY
(CASH ONLY, NO EFTPOS)**

**Tread lightly,
you're in**

toheroa territory



While you're enjoying the racing at Oreti Beach this February, spare a thought for the locals.

You won't see them, but there's a whole population of sensitive shellfish right under your feet. They're called toheroa and they're an important part of the coastal community on this beach.

Toheroa are a protected species because their numbers are dwindling. Oreti Beach is one of three sites in Southland where these molluscs can be found. No-one is generally allowed to disturb the toheroa in their beds without very good reason.

You might think that having motorbikes revving and racing mere centimetres over their heads would in fact upset the toheroa – and you'd be right. So each year the organisers of the Burt Munro Challenge work with local iwi and Environment Southland to identify the best place to race, away from the area where most of the toheroa live.

So please – tread lightly while you're on Oreti Beach. That way you can enjoy the action without disturbing the neighbours.

Thanks on behalf of the toheroa population!

SOUTHLAND HONDA TRACK DAY

Wednesday 7 February • Teretonga Park, Sandy Point

Details

MNZ Permit #20536

Sign In: 8.30am

Track Time: 9.30am – 4.30pm

Classes

- Beginners (Road bikes only)
- Intermediate (Road bikes only)
- Expert (Road bikes only)
- Race (Race bikes only)

In the event of a full class, the group will be split into 0-599cc & 600cc and above

INDIAN MOTORCYCLE TWILIGHT DRAG RACING

Thursday 8 February • Teretonga Park, Sandy Point

Details

Sign In & Vehicle Check: 3.00pm

Briefing: 5.45pm

Racing Starts: 6.00pm

Classes

- Comp Bike
- Modified Bike
- Japanese Street
- BEARS Street
- Demonstration

Racing Information

- This is a NZDRA sanctioned event and drag racing is to be conducted under NZDRA rules.
- Street bikes must have a current WOF.
- All non WOF bikes require steel chain guard.
- All non WOF bikes require NZDRA race licence and technical inspection IHRA or MNZ race licence or equivalent national or international race licence.
- Bracket racing format will be employed.
- Machine inspection is required for all bikes.
- Riders under 10 seconds require one piece or zip together two piece leathers and back protectors.
- All riders require full safety gear.
- Should a meeting or part of a meeting be cancelled, any entry refunds will be made at the sole discretions of the organisers. The organisers reserve the right to alter the meeting format as deemed necessary.
- Prize-giving will occur directly after racing concludes at the track.



**THERE WILL BE EXCITING
DEMONSTRATIONS OF INTEREST
DURING THE COURSE OF
THE EVENT**

STAR INSURANCE NZ HILL CLIMB CHAMPS

Thursday 8 February • Flagstaff Road, Bluff

Details

MNZ Permit #20599

Sign In: 8.00am

Briefing: 9.00am

Racing Starts: 10.00am

Classes

NZ Championship Classes:

- Up to 600cc
- 601cc to Open
- Super Quad

Support Classes:

- Classic Pre '63
- Post Classic Pre '72
- Post Classic Pre '82
- Post Classic Pre '89

Racing Information

This event will be run under MNZ racing rules and the below supplementary regulations.

- One rider, one bike please – apologies for any inconvenience caused.
- All competitors must hold a current MNZ Championship license. No day licences. Do not send in your entry form without your MNZ licence number.
- All competitors must provide a valid MNZ licence and club membership card at sign in. Failure to produce any of these items will result in exclusion from the meeting.
- Non MOM classes will be in accordance with the supplementary regulations.
- The timing of all Hill Climb Championships will be by electric or similar timing equipment.
- Races will be started by lights.
- All entrants will have a minimum of two practice runs before the start of competition followed by a maximum of three official timed runs in each class entered.
- Competitors must nominate the class entered before the run is timed.
- Two practice runs shall be deemed sufficient if more than one class is entered on the same machine.
- A rider's fastest timed run on the day will only count towards the class nominated before the run.
- Please present your machine in a clean, tidy, and safe condition.
- The organisers reserve the right to accept an entry and to manage the classes and race order as may be required due to time available and entries received.
- Classes are restricted to 20 riders in each class.
- Please ensure your bike has clear readable numbers.
- The organisers reserve the right to issue temporary numbers to avoid duplication. Competitors will be advised of any such change to their racing number along with their application acceptance by 2 February 2024.
- The Bluff Hill Climb will be restricted to the first 100 registrations.
- Prize-giving occurs directly after racing concludes onsite.
- Bluff is approximately 30 minutes drive from the rally site.



INDIAN MOTORCYCLE BEACH RACING & NZ CHAMPS

Friday 9 February • Oreti Beach, Otago

Details

MNZ Permit #20598

Sign In: 4.00pm

Briefing: 5.00pm

Racing Starts: 6.00pm

Classes

NZ Championship Classes:

- Up To 250cc
- Up To 500cc
- Open Class
- ATVs D-750cc
- Super Quad

Support Classes:

- Open Class Burt Munro Trophy – 50 Miles
- SMCC 1 Mile Dash – Open Class Mrs Irving Hayes Cup
- Classic Pre '63 & Pre '72
- Indian Motorcycles & Girder Forks
- Pre '95 Open
- Clubmans Class

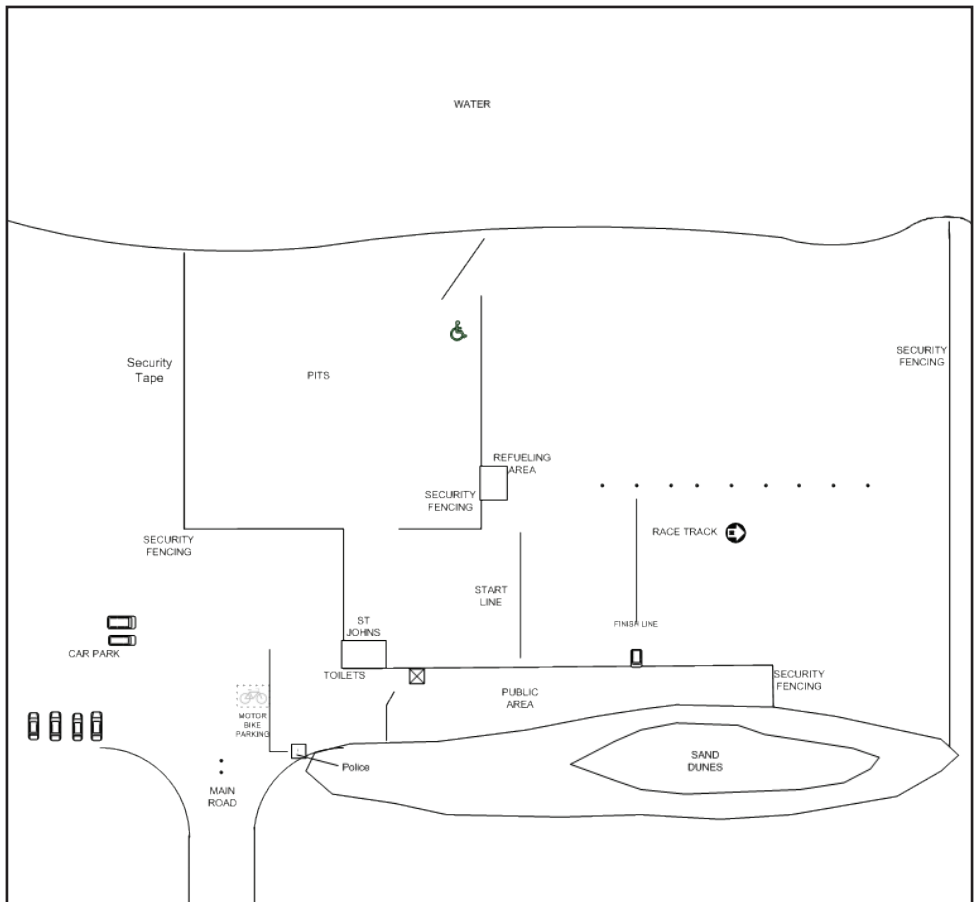
Racing Information

This event will be run under MNZ racing rules and the below supplementary regulations.

- All classes will conform to MNZ rules.

- Non MOM classes will be in accordance with the supplementary regulations.
- Special event upgrade licence: For all riders who are competing in the Championship classes who hold a Club Licence, you can purchase a Special Event Upgrade Licence. This licence must be applied and paid for by entry closing date. You must have competed in more than 3 previous MNZ permitted events (Senior) or 6 previous MNZ permitted events (Junior), proof of which will be from your logbook. A rider can only purchase one Special Event Upgrade Licence in a licencing season – fee is \$50.
- One Event Licence available for Clubman's Class and Non Championship Classes only. See: www.smcc.org.nz.
- All NZ title class competitors must hold a current MNZ competition licence or special event upgrade licence – which must be applied for in advance.
- Please present your machine in a clean, tidy and safe condition.
- The organisers reserve the right to accept an entry and to manage the classes and race order as may be required due to time available and entries received.
- Please ensure your bike has clear readable numbers.
- Racing organisers reserve the right to issue temporary race numbers to avoid duplication. Competitors will be advised of any such change to their racing number along with their application acceptance by 2 February 2024.
- All races will have half-mile straights and be run in an anticlockwise direction.
- Races will be started and finished by the drop of a flag.
- There may be restrictions to race entry numbers in some classes, entries therefore will be on a first-entered first-in basis.
- Competitors will need their event and bike identification to gain entry to the beach.
- There will be a specified competitors parking area where you will also be able to tend to your bikes. Within this area will be several refuelling stations where you must fuel your bikes. This is a requirement of resource consent and the only place you are permitted to refuel your machine.





- Pre '95 Open is for any motorcycle produced prior to 1995. Capacity open.
- Beach racing will have a rolling prizegiving as races occur and winners are announced with exception of the Open Class Burt Munro Trophy – 50 Mile which will occur at prizegiving at 6.30pm on Sunday 11 February at Ascot Park Hotel. Please note that if you place in a race and are in the following race and are not there to receive your sash/trophy, these will be posted out to you.
- Oreti Beach is approximately 1.5km from the rally site and there will be buses running to shuttle people from the rally site to the event.
- There will be food and drink vendors operating at Oreti Beach during the races.



E HAYES & SONS TERETONGA SPRINT RACES & NZ SUPERBIKE CHAMPS

Friday 9 – Sunday 11 February • Teretonga Park, Sandy Point

Details

MNZ Permit #20576

Sign In: 7.00am daily

Briefing: 8.00am daily

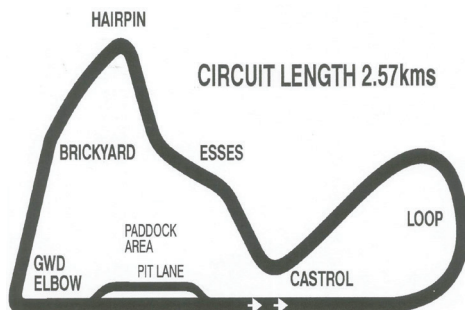
Racing Starts: 9.00am daily

Classes

- Classic Pre '63 With Girder Forks
- Classic Pre '63 Junior Up To 500cc
- Classic Pre '63 501cc+
- Post Classic Pre '72 Up To 500cc
- Post Classic Pre '72 501cc+
- Post Classic Pre '82 Junior Up To 600cc
- Post Classic Pre '82 Open
- Post Classic Pre '89 Junior Up To 600cc
- Post Classic Pre '89 Open
- Formula 1
- NZ Superbike
- Formula 2
- NZ Supersport
- Formula 3
- Protwin
- Super Motard Open
- Post Classic Pre '95
- BEARS Junior Up To 750cc
- NZ Supersport 300
- BEARS F1 Open
- Sidecar up to Pre '82 classic
- Sidecar Pre '89 and '95 Modern
- NZ Sidecar Formula 1 & 2

Racing Information

- There will be two sprint races for all classes each day; some classes may be combined depending on entries at the close off date.
- Riders competing in NZ Championship classes must hold an MNZ Championship licence. Other classes require an MNZ Club Licence.
- No dual classing in a combined race e.g. if you enter Superbike you cannot be in F1 as they will be run together, as with Supersport and F2.
- The winner of all senior classes will receive magnificent keepsake trophies and sashes for the first three place getters in each class.
- Practice/qualifying is on Friday 9 February at Teretonga Park from 9am to 5pm. The cost is included in the entry fee.
- Qualifying times from Friday will apply in Race 1 for each class. Grid positions for subsequent races will be determined by your finishing order in the previous race.
- Non MOM classes will be in accordance with the supplementary regulations. See: www.burtmunrochallenge.co.nz.
- NZ Championship Classes also refer to NZSBK supplementary regulations. See: www.mxt.co.nz.
- Machines presented for examination must be presented in a clean and tidy condition.
- Please ensure your bike has readable numbers.
- Teretonga & NZSBK Presentation of trophies and sashes & NZ Beach Racing 50 Mile Trophy will be held from 6pm onwards on Sunday 11 February at Ascot Park Hotel



SUPER SELLER SHELLEY SPEEDWAY

Saturday 10 February • Oreti Park Speedway, Otatara

Details

Sign In & Vehicle Check: 10.00am

Briefing: 2.00pm

Racing Starts: 3.00pm

Classes

- Speedway Solos (A Grade)
- Speedway Solo Support
- Speedway Classic Solos
- Sidecar (Transponder compulsory)
- Sidecar Classics (Pre 2000 Sidechairs per SNZ Rule Book)
- Speedway Solo Junior 125cc (8 – 11 year old riders)
- Speedway Solo Junior 200cc (12 – 15 year old riders)
- Peewee Solo Division 1 (Maximum 70cc for 7 – 8 year old riders)
- Peewee Solo Division 2 (Maximum 53cc for 5 – 6 year old riders)
- Flat trackers (Transponder compulsory)

Racing Information

This event will be run according to the Speedway New Zealand rules and the below supplementary regulations.

- All Riders and Swingers must hold current SNZ Inc licences and all vehicles must comply with the current Speedway New Zealand Rule Book and supplementary regulations.
- Sidecar, Sidecar Support and Flat Tracker Classes only are required to provide their own TR2 MyLaps transponders as required per SNZ rules. Classic Sidecars i.e Pre 2000 Sidechairs are exempt.
- Oreti Park Speedway reserves the right to issue temporary numbers to avoid duplication. Competitors will be advised of any such change to their racing number along with their application acceptance by 2 February 2024.
- It is a condition of entry that competing bikes arrive at vehicle check displaying the number allocated to them and that the numbers

comply with the rules of Speedway New Zealand Inc (no cardboard/paper numbers).

- Oreti Park Speedway reserves the right to alter the format and closing date after consultation with officials if deemed necessary.
- Sponsor transfers may be affixed to each bike.
- There may be restrictions to race entry numbers so please get your entry in early to avoid disappointment.
- In the event that you have forwarded an entry form and you discover that you cannot attend, you must notify Oreti Park Speedway of your inability to honour this contract in advance.
- Noise level of 95dba will be enforced.
- Alcoholic beverages will not be consumed in the pits until the end of the final race of the night's programme. Smoking is not permitted in the pits.
- Format: The format will be based on heats with a B & A Final (depending on entry numbers), aiming for a minimum of 3 rides for all classes.
- Track Size: Length 408m, straights 15m, corners 25m.
- Track Surface: lime, crusher dust and saw dust.
- Rain Out: Should the event be "rained out", the meeting will endeavor to hold the meeting the next day, details advised when rain-off announced.
- Prizes: Trophies for 1st place getters and Sashes for 1st to 3rd overall. Prize giving will take place immediately after the final results are confirmed.



PLAN YOUR TRIP

Visit The Website

Merchandise

Kit yourself out before the event and purchase your 2024 merchandise. T-shirts, hoodies, singlets, overalls, caps, beanies, patches, stickers – there's something for everyone.

Activities

Make the most of your time in the south and plan what to do before, during, and after the event. Explore suggestions for things you can see and do while you're in Southland.

Go to www.burtmunrochallenge.co.nz

Organise Accommodation

Looking for somewhere to stay in Invercargill during the Burt?

Ascot Park Hotel

0800 272 687
www.ascotparkhotel.co.nz

The Langlands

0800 84 86 88
www.thelanglands.co.nz



Balmoral Lodge

0800 225 667
www.balmoralmotel.co.nz

Homestead Villa Motel

0800 488 588
www.villamotel.co.nz

Kelvin Hotel

0800 802 829
www.kelvinhotel.co.nz

Book Interislander Travel

Are you needing to book a ferry trip to get to the Burt?

Interislander are offering a special 20% discount off refundable fares using the promo code: BURT241

Travel Period

27 January 2024 - 18 February 2024

Terms and Conditions

Normal fare conditions apply. Not available in conjunction with any other offer. Must supply proof of participation in the 2024 Burt Munro Challenge.

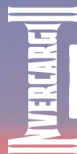
Booking Process

Promo code must be entered at time of booking to secure the special net rate. Travel can be booked online or via call centre. Valid email confirmation of your Burt Munro tickets or passes purchased must be shown at check in, failure to do so will result in full retail rate of the day being applied and charged for at check-in.

Go to www.greatjourneysofnz.co.nz/interislander

RIDE ON IN

INVERCARGILL MUST DO'S



Fuel up at a cafe in the centre city and try the famous local delicacy, the cheese roll



Visit Oreti Beach, a coastal highway and Burt's famous testing ground



Tour Transport World, a world-class display of all things automotive and more



Look at the variety of street art, including the Burt Munro mural



Pop in to see E. Hayes & Sons collection, including Burt's original Indian Scout



Take a photo with the Burt Munro statue at Queens Park



Explore Classic Motorcycle Mecca, a premiere museum with over 300 motorcycles



Cruise to Riverton and Orepuki or head out to the Catlins for spectacular scenery

DISCOVER MORE AT SOUTHLANDNZ.COM



GET IN TOUCH IF YOU HAVE ANY QUESTIONS

Burt Munro Challenge, PO Box 1339, INVERCARGILL 9840

burtmunro@greatsouth.nz

03 211 9105

THE BURT MUNRO CHALLENGE
IS PROUDLY PRESENTED BY



THANK YOU TO ALL OF OUR SUPPORTERS

