



SOUTHLAND MOTORCYCLE CLUB PRESENTS

Burt Munro Challenge

4 - 8 FEBRUARY 2026 · INVERCARGILL

WWW.BURTMUNROCHALLENGE.CO.NZ

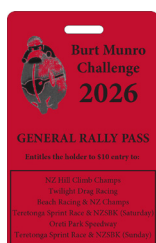
RALLY EVENT PASS

You have been issued with a credit card type event pass on a lanyard. Please have it available to present at all times. This pass will serve as the ONLY entry and exit pass allowing YOU AND YOUR BIKE through the gate. Your bike will not be allowed to leave the site without you producing the matching pass. Whilst we cannot guarantee security on site, we do our absolute best to provide it - please secure your own gear!

There are two types of passes. Both rally event pass types entitle you to:

- Access to camping at the Burt Munro Rally Site at Oreti Park
- A Burt Munro Challenge Rally badge
- Access to Rally facilities including showers (free), food stalls, bar and merchandise tents
- Access to the live entertainment marquee at the Rally on Thursday, Friday, and Saturday nights
- Complimentary buses to and from the E Hayes & Sons Beach Racing
- Complimentary courtesy coaches to and from the Invercargill CBD on Friday and Saturday evenings between 7pm - 1am

Both pass types also have a special entitlement each, as detailed below:



General Rally Pass

This pass entitles you to a 50% discount to all Burt Munro Challenge racing events (\$10 instead of \$20 per event)



All Access Rally Pass

This pass entitles you to free access to all Burt Munro Challenge racing events (5 events in total)

FOOD

A variety of food vendors offering plenty of fresh food and hot and cold drinks throughout your stay at the rally site and track-side at racing events.

TOILETS

Located at various positions around the rally site. Toilets will be cleaned regularly and your assistance in keeping them this way would be appreciated.

SHOWERS

Facilities available all day, every day near the main gate. Please wear your jandals and help keep these areas tidy between cleaning. Individual cubicles for privacy.

FIRST AID

Available around the clock, at the main gate.

BREATH TESTING

A breath testing machine is available at the main gate. You are encouraged to use it on a "Fail - go and have a coffee" basis. We are very appreciative of this service and ask for your courteous cooperation.

WEDNESDAY

SOUTHLAND HONDA TRACK DAY

**8.30am, Wednesday 4 February
Teretonga Park, Sandy Point**

The Southland Honda Track Day gives everyday riders the chance to experience the world's southern-most race circuit. Starting at 9.30am and finishing at 4pm, riders are grouped according to ability with the idea of upskilling, learning how to ride a race circuit and generally having fun with your mates as you blast round on motorbikes in a safe closed-circuit environment. No on the day entries accepted.



THURSDAY

STAR INSURANCE NZ HILL CLIMB CHAMPS

**10am, Thursday 5 February
Flagstaff Road, Bluff**

Riders from all over New Zealand descend on Bluff to take on the iconic Bluff Hill (Motupohue) in the opening competition event of the 2025 Burt Munro Challenge: the Star Insurance NZ Hill Climb Championships. Tony Rees of Whakatāne won the event again for 2025 with a time of 44.091 seconds, riding his 2020 Honda CBR 1000RR-R and claiming the Bluff Hill Climb fastest time Trophy. Come along and watch as riders tackle the daunting climb against the clock. The action begins at 10am.

INDIAN MOTORCYCLE TWILIGHT DRAG RACING

**6pm, Thursday 5 February
Teretonga Park, Sandy Point**

Burt Munro competed and won many quarter mile and eighth mile sprints both flying and standing starts. This year's drag racing event will be a showing of horsepower and speed that would make Burt himself proud. The kiwi innovative spirit, sense of adventure and passion is alive and well and on show. Who is going to be quickest? Norton, Suzuki, Ducati, Indian Honda, Harley Davison, Yamaha, Aprilia, Kawasaki, Triumph, BSA, Matchless, NZDRA Powersled, turbocharged, supercharged, nitrous oxide enhanced? Will it be a battle of power, aggression or outright no-fear attitude? Expect to see some 9-second bikes, get down to the track for New Zealand's iconic full-noise Motorcycle drag racing powerfest! Cash only, NO EFTPOS. NO DOGS.

E HAYES & SONS TERETONGA SPRINT RACES & STAR INSURANCE NZ SUPERBIKE CHAMPS

**9am daily
Saturday 7, Sunday 8 February
Teretonga Park, Sandy Point**

**Practice/Qualifying day on
Friday 6 February.**

The races will be showcasing some of New Zealand's best racers, both young and old, from sidecars to super bikes. With an action packed program there's something for everyone to see. So come and enjoy yourselves, walk around the outfield and pits and take your time to appreciate the selection of bikes. We look forward to seeing you all - and have a hell of a week!

SATURDAY

SUPER SELLER SHELLEY SPEEDWAY

**3pm, Saturday 7 February
Oreti Park Speedway, Otatara**

Get ready for high octane excitement at the Super Seller Shelley Speedway, proudly hosted by Southern Bolts & Fasteners Oreti Park Speedway. The track will roar to life with solo speedway bikes, speedway sidecars, peewee and junior solo speedway bikes, plus the ever popular flat trackers now firmly part of the action. When the racing wraps up, the pits will open, your chance to meet the riders, check out the machines, and soak up the atmosphere!

FRIDAY

E HAYES & SONS BEACH RACING & NZ CHAMPS

**10am, Friday 6 February
Oreti Beach, Invercargill**

Come along this year and enjoy the action packed beach races. It will be a day of great racing, with lots of fun that you can't miss! Don't forget the free shuttle bus from the camp site for all you rally pass holders!





RALLY SITE MEALS

BREAKFAST

7AM – 9AM THURSDAY – SUNDAY

Continental Breakfast: \$22 pp

- Selection of cereals
- Granola with yoghurt and compote
- Toast with selection of spreads
- Melon platters

Buffet Breakfast: \$32 pp

- Eggs benedict with ham
- Upper Cuts streaky bacon
- Breakfast sausage
- Hash browns
- Creamy balsamic mushrooms
- Roasted button mushrooms
- Poached eggs
- Toasted ciabatta

DINNER

5.30PM – 9PM THURSDAY

5.30PM – 11PM FRIDAY

5.30PM – 11PM SATURDAY

Buffet Dinner: \$38 pp

- A selection of locally sourced roast meats
- Hot vegetables
- Desserts (changing each evening)

Food Trailer

- Makikihi fries with MASH aioli & tomato sauce
- Upper Cuts beef smash burgers
- Asian pork belly roti rolls
- Hot dogs



BRING CASH!

Most food trucks accept cards, but sometimes the connection drops at Oreti Beach. Cash is your best bet for food and merch!

FOOD TENT

An array of food vendors are available from breakfast time each day until the bar closes at night. Pies are available for purchase at the bar throughout bar open hours.

MERCHANDISE STALL

A wide variety of items are available from the merchandise marquee, including t-shirts, caps, patches and more.

Shop hours:

Wednesday 12pm - 6pm

Thursday 10am - 10pm

Friday 10am – 10pm

Saturday 11am – 10pm

LICENSED BAR

Thursday from 5pm

Friday & Saturday from 3pm

Located in the entertainment marquee. We reserve the right to serve anyone as this is a licensed bar and both the organisers and you are subject to all laws.

LIVE MUSIC

Thursday night

8pm - 10pm: Southern Institute of Technology performances

Friday night

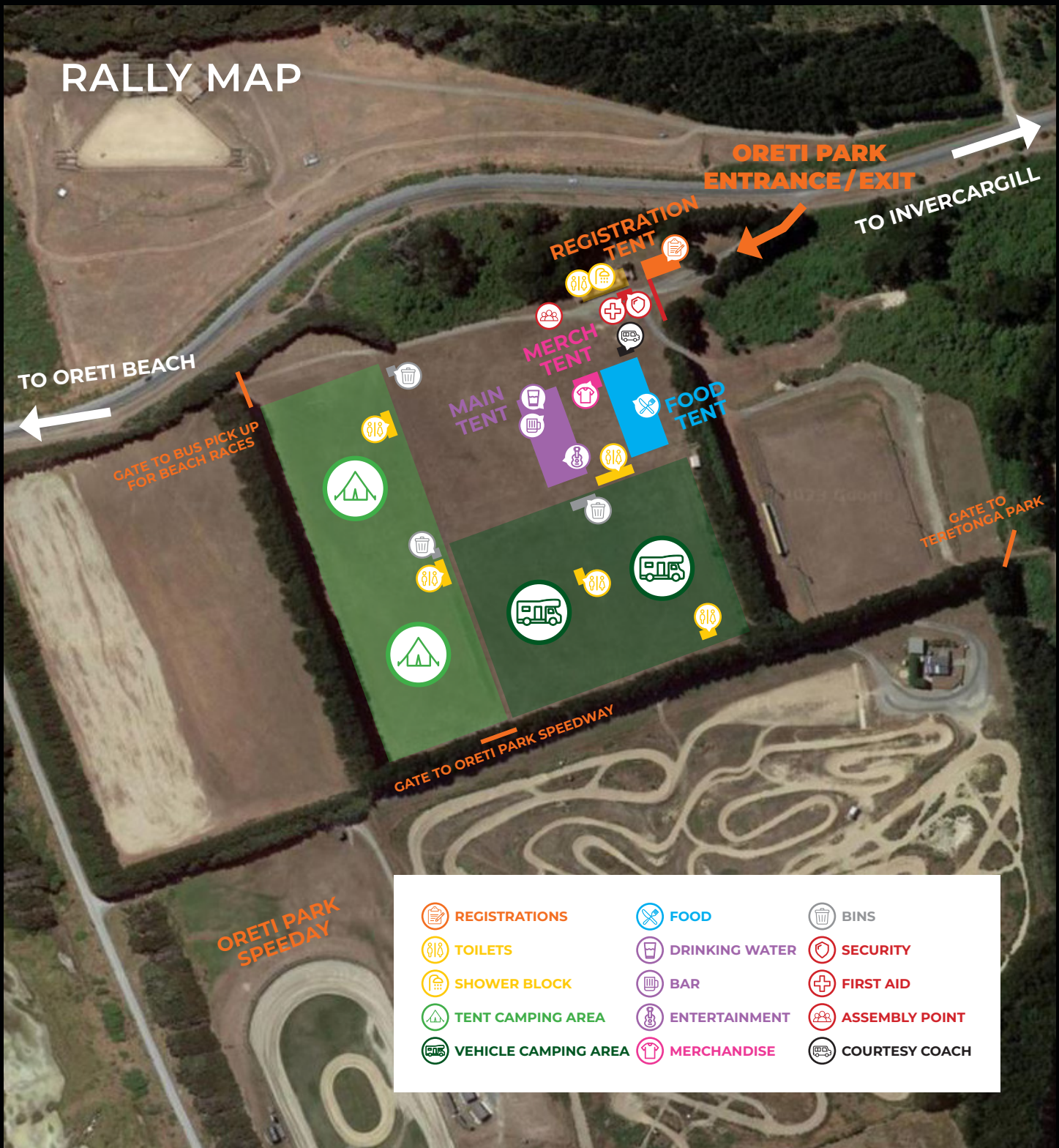
7pm - 1am: Triple Shot, Hitmen

Saturday night

7pm - 1am: Jetset, Yardmen



RALLY MAP



- | | | | | | |
|--|----------------------|--|----------------|--|----------------|
| | REGISTRATIONS | | FOOD | | BINS |
| | TOILETS | | DRINKING WATER | | SECURITY |
| | SHOWER BLOCK | | BAR | | FIRST AID |
| | TENT CAMPING AREA | | ENTERTAINMENT | | ASSEMBLY POINT |
| | VEHICLE CAMPING AREA | | MERCHANDISE | | COURTESY COACH |

RACE INFO AT BURTMUNROCHALLENGE.CO.NZ